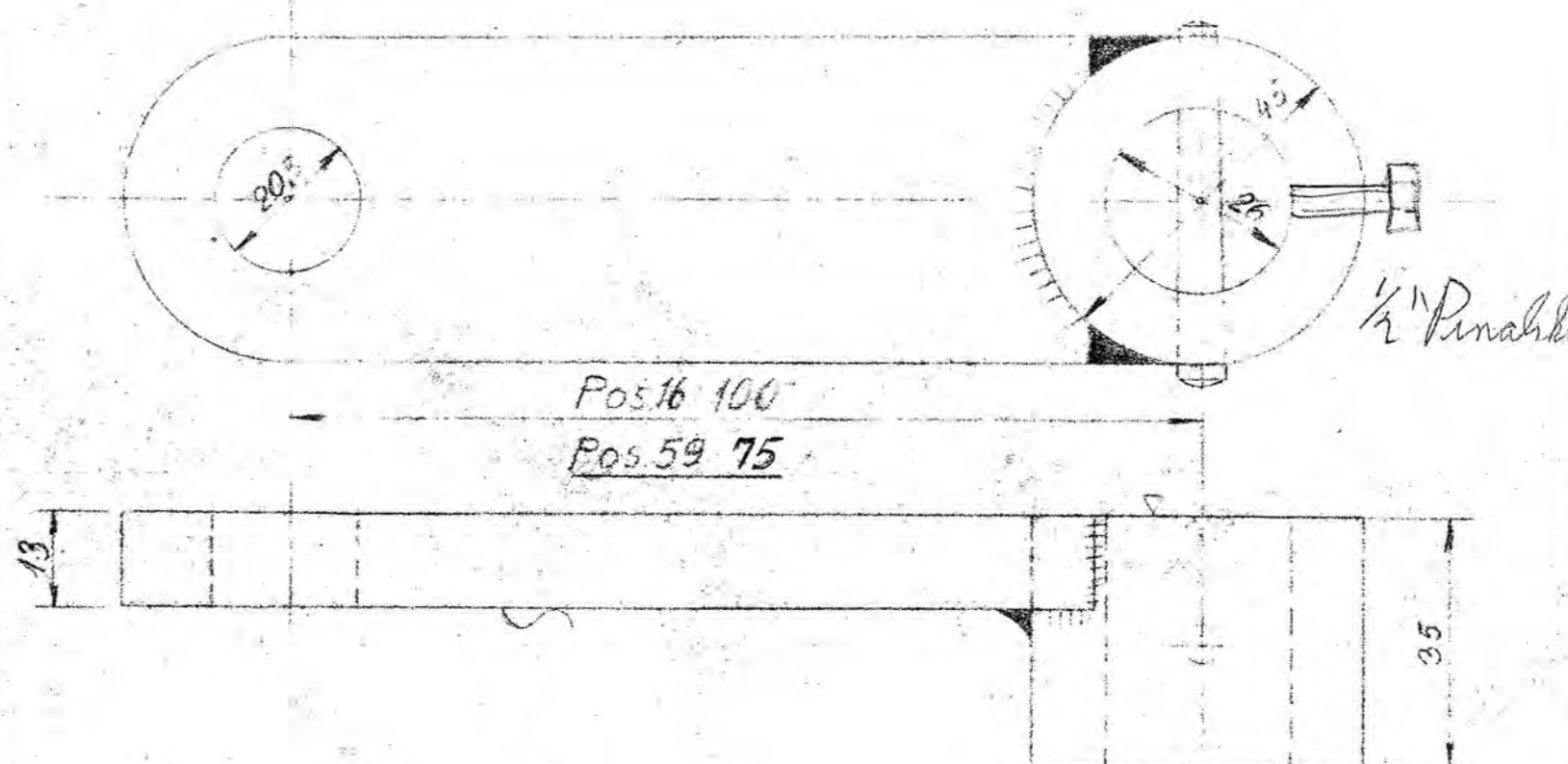
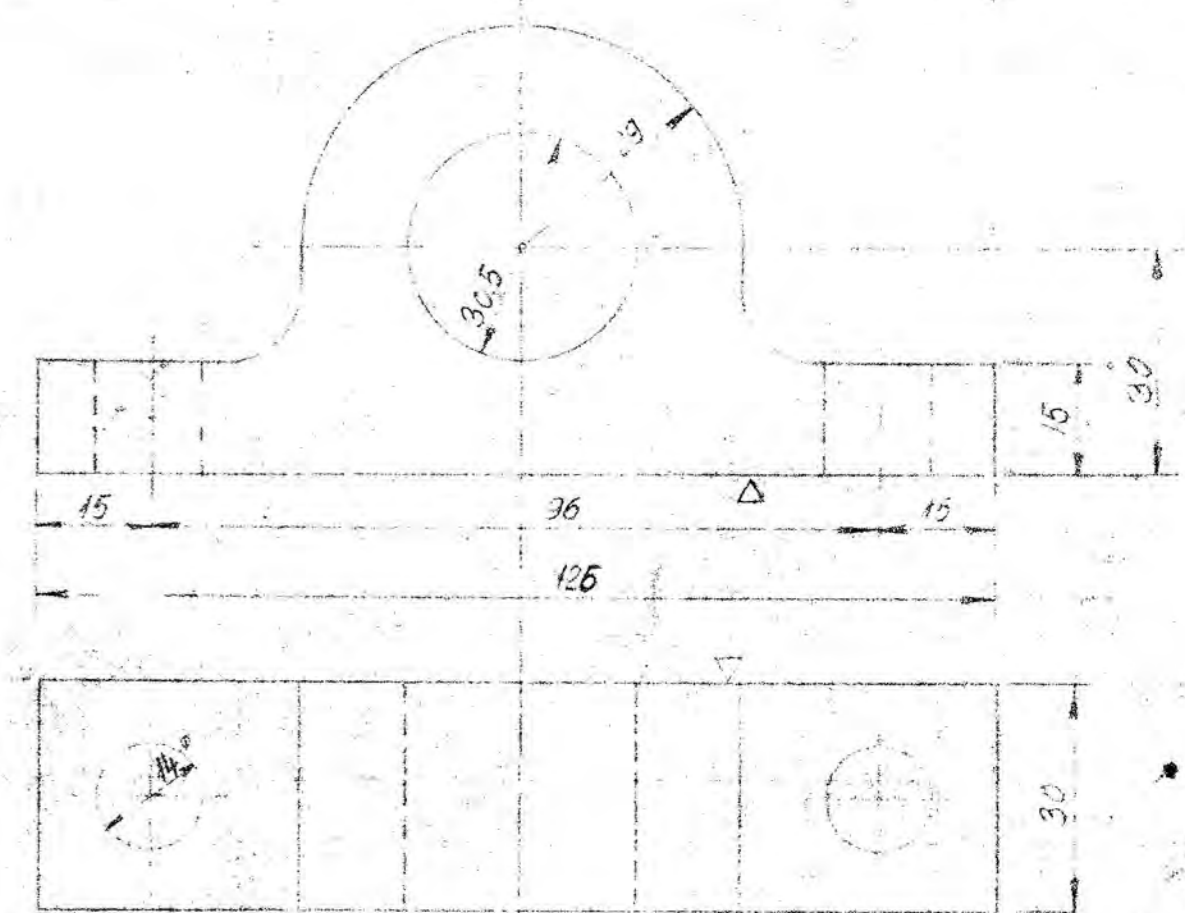


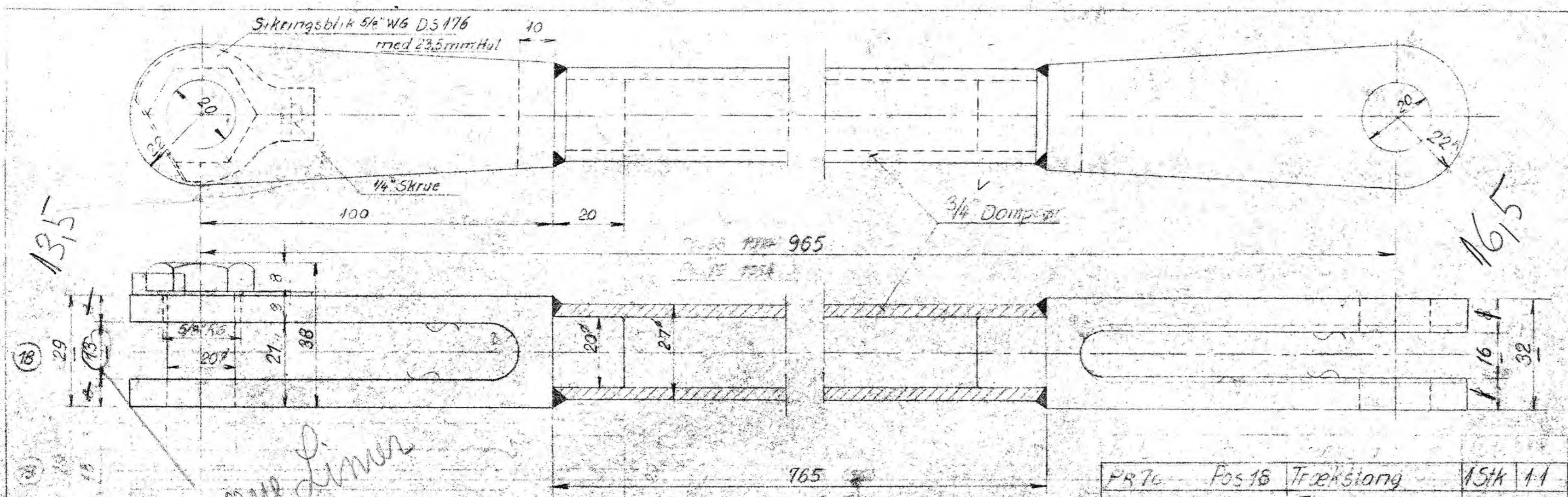
PR 7c Pos 15 Pedal 15x 1-25
Flussjern



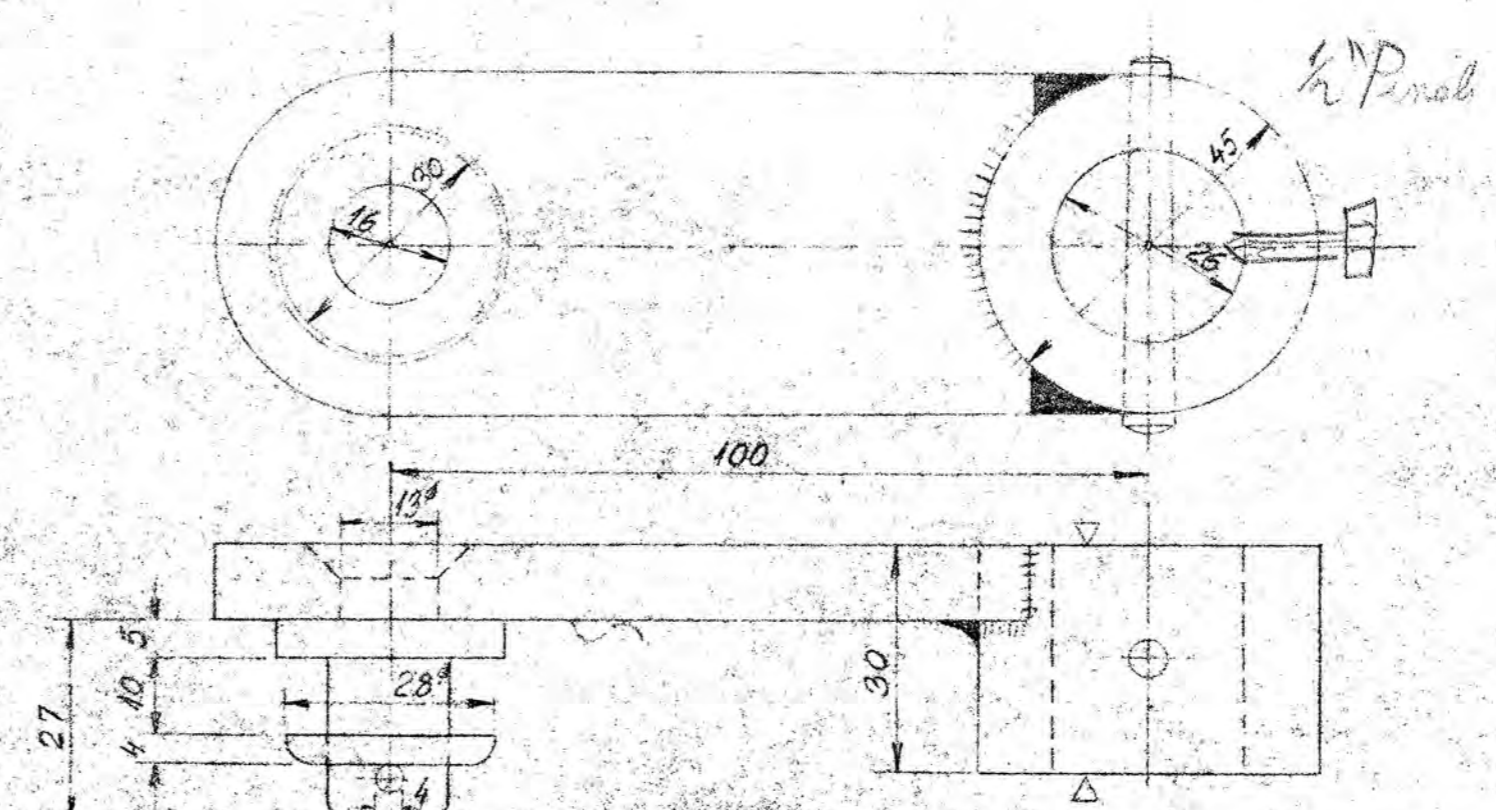
PR 7c Pos 16 og 59 Arm 25x 1-1
Flussjern



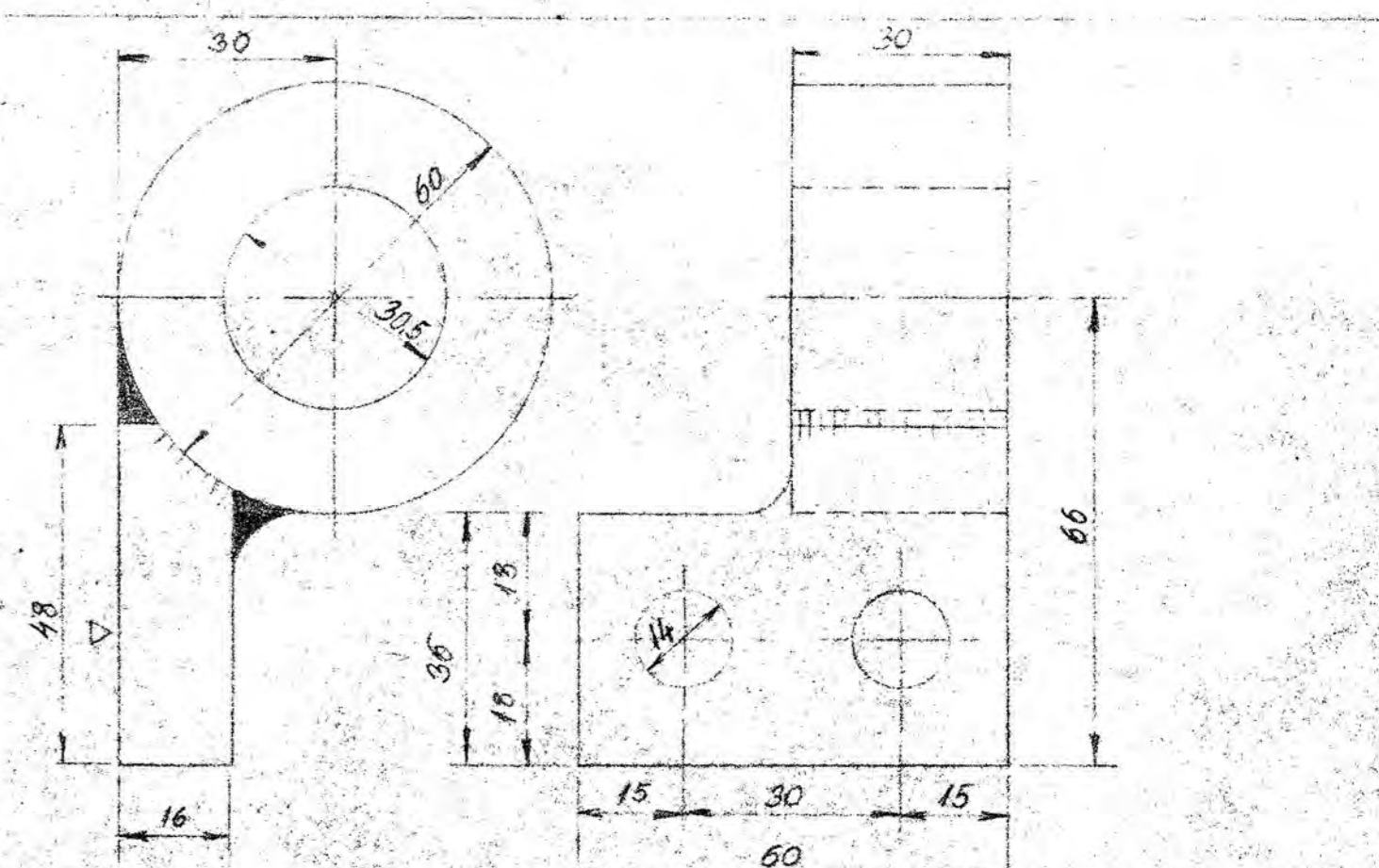
PR 7c Pos 17 Leje 5x 1-1
Flussjern



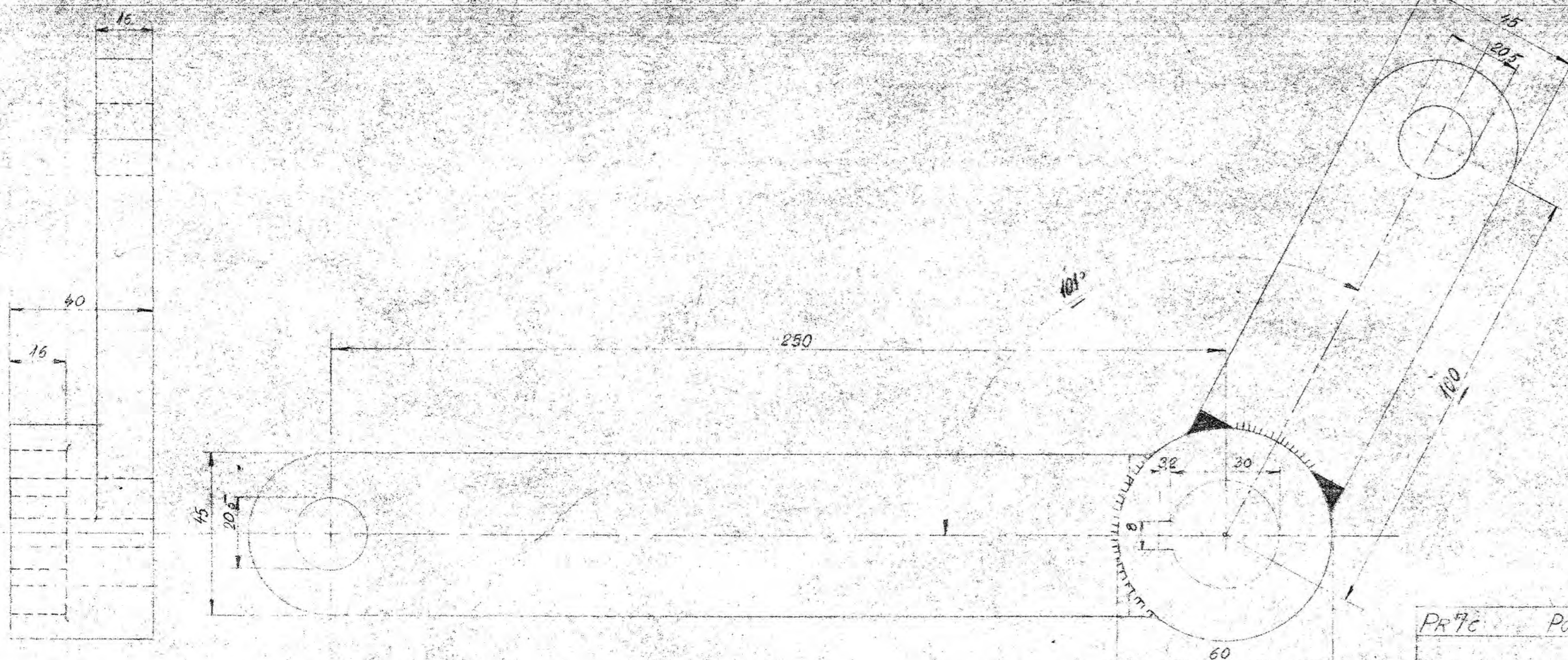
PR 7c Pos 16 Trækstang 15x 1-1
Flussjern



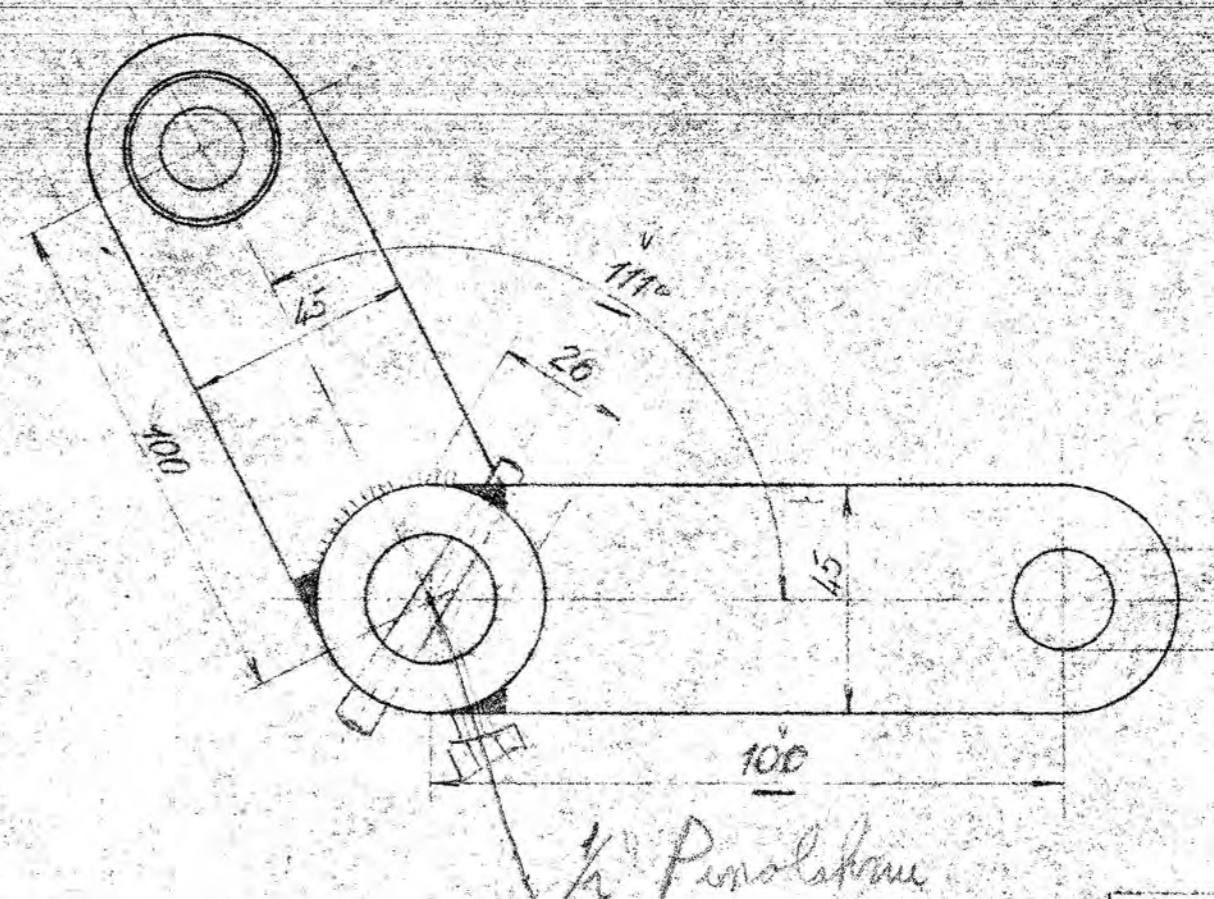
PR 7c Pos 20 Arm 35x 1-1
Flussjern



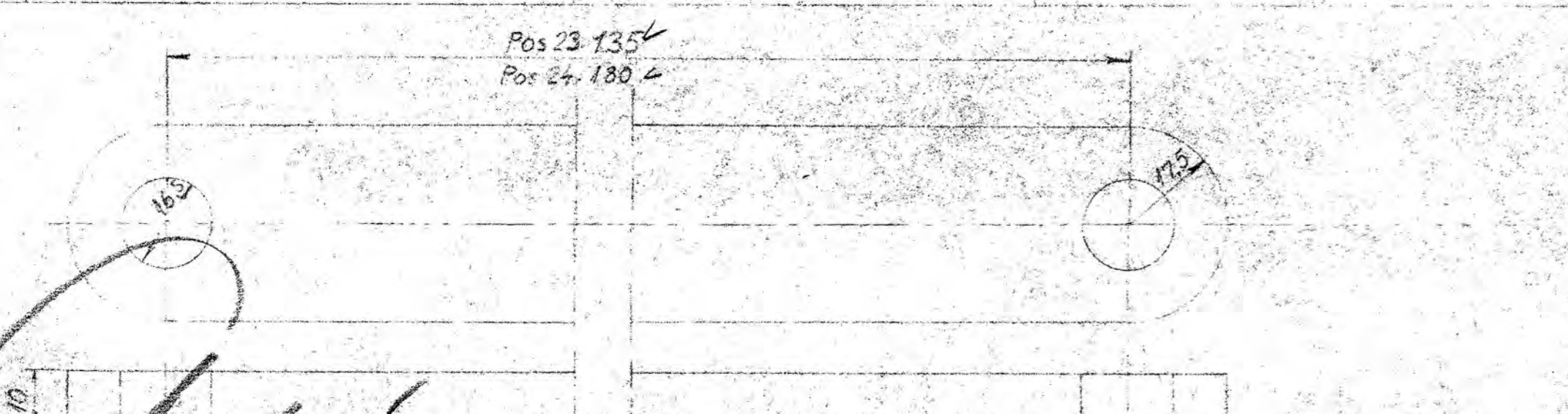
PR 7c Pos 21 Leje 11x 1-1
Flussjern



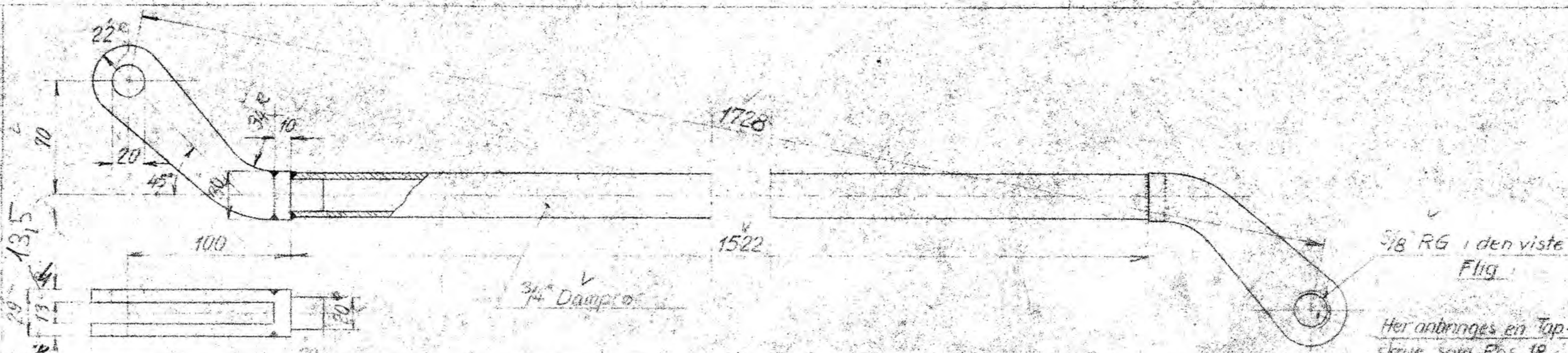
PR 7c Pos 22 Vinkelarm 15x 1-1
Flussjern



PR 7c Pos 25 Vinkelarm 15x 1-1
Flussjern



PR 7c Pos 23 Trækstang 15x 1-1
Pos 24 Trækstang 15x 1-1
Flussjern



PR 7c Pos 19 Trækstang 15x 1-1
Flussjern

Nr	Genstand	Målt	Material	Mængde
1	Arm	59	Flussj	
1	Vinkelarm	25	Flussj	
1	Trækstang	24	Flussjern	
1	do	23	do	
1	Vinkelarm	22	do	
1	Leje	21	do	
3	Arm	20	do	
1	Trækstang	19	do	
1	do	18	do	
2	Leje	17	do	
2	Arm	16	do	
1	Pedal	15	do	

Størrelse	Genstand	Nr	Material	Mængde
345-36	ES			

De danske Statsbaner
Maskinafdelingen

MaalsskTejn: 9-8-63 33
1:1
1:2,5
1:1
MOKK
Rev
nota
A. Z.
PR 7c.

Maskinafdelingens Tegnestue
Centralværkstedet København

11 AUG 1944